

Test Report

Report No. ECL01H006246001

Page 3 of 5

Test Method(s)

Tested Item	Standard(s)	Equipment	Manufacturer	Model	Test Type
Asbestos	ISO 22262-1:2012 NIOSH 9000:1994	PLM	Leica	DM2500P	Qualitative And Semi
		XRD	SHIMADZU	XRD-7000	quantitative

Test Result(s)

Material Category	Substances/CAS Numbers	Results
Asbestos (CAS 1332-21-4)	Chrysotile/12001-29-5	N.A.D.
	Crocidolite/ 12001-28-4	N.A.D.
	Amosite (Grunerite)/ 12172-73-5	N.A.D.
	Fibrous Tremolite/ 77536-68-6	N.A.D.
	Fibrous Actinolite/ 77526-66-4	N.A.D.
	Fibrous Anthophyllite/ 77536-67-5	N.A.D.

Note:

-N.A.D. = No Asbestos Detected

Statement of Compliance

- The limit of detection of this method is defined as the detection and identification of one fibre or fibre bundle in the amount of sample examined. With appropriate matrix reduction procedures that are tailored to the nature of the sample, the limit of detection can be significantly lower than 0.1%.
- The estimated concentration(s) of the asbestos varieties detected in ranges is/are as follows: Trace (<0.1%), 0.1%-5%, 5%-50%, and 50%-100%.
- CTI Asbestos Testing Center has established strict quality assurance and supervision procedures in accordance with international standard. And the laboratory participates in the AIMS* every year (four times per year) to confirm our proficiency.
- Even after disintegration it can be very difficult, or impossible, to detect the presence of asbestos in some asbestos-containing bulk materials using polarized light microscopy. These materials often contain milled asbestos with too small fibre diameter and length to be detected.
- X-ray diffraction analysis cannot discriminate the particle shape in analytical sample and detects not only asbestos of fibrous form but also non-fibrous minerals related to asbestos such as serpentine minerals and/or amphibole minerals if they coexist.

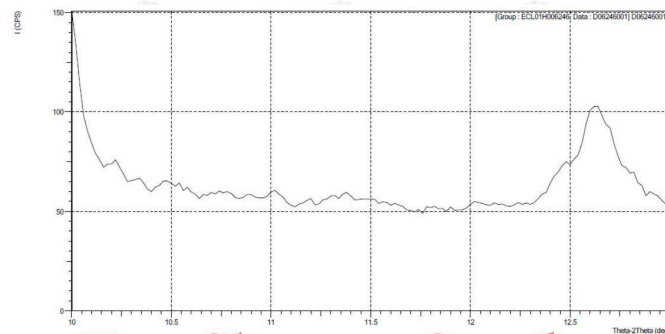
*The Asbestos in Materials Scheme (AIMS) is an international inter-laboratory testing scheme, and it is managed by the Health and Safety Laboratory (HSL) which on behalf of the Health and Safety Executive (HSE) of UK

Test Report

Report No. ECL01H006246001

Page 4 of 5

Spectrum



Spectrum



PLM Spectrum (100X)

Test Report

Report No. ECL01H006246001

Page 5 of 5

Photo of the sample(s)



WenCheng Seals
文成密封
*** End of report ***

This report is considered invalidated without the Special Seal for Inspection of the CTI. This report shall not be altered, increased or deleted. The results shown in this test report refer only to the sample(s) tested. Without written approval of CTI, this test report shall not be copied except in full and published as advertisement.

QCTI TS-NID-0005-WI-02-P02

Version 1.2